

Item 5.8

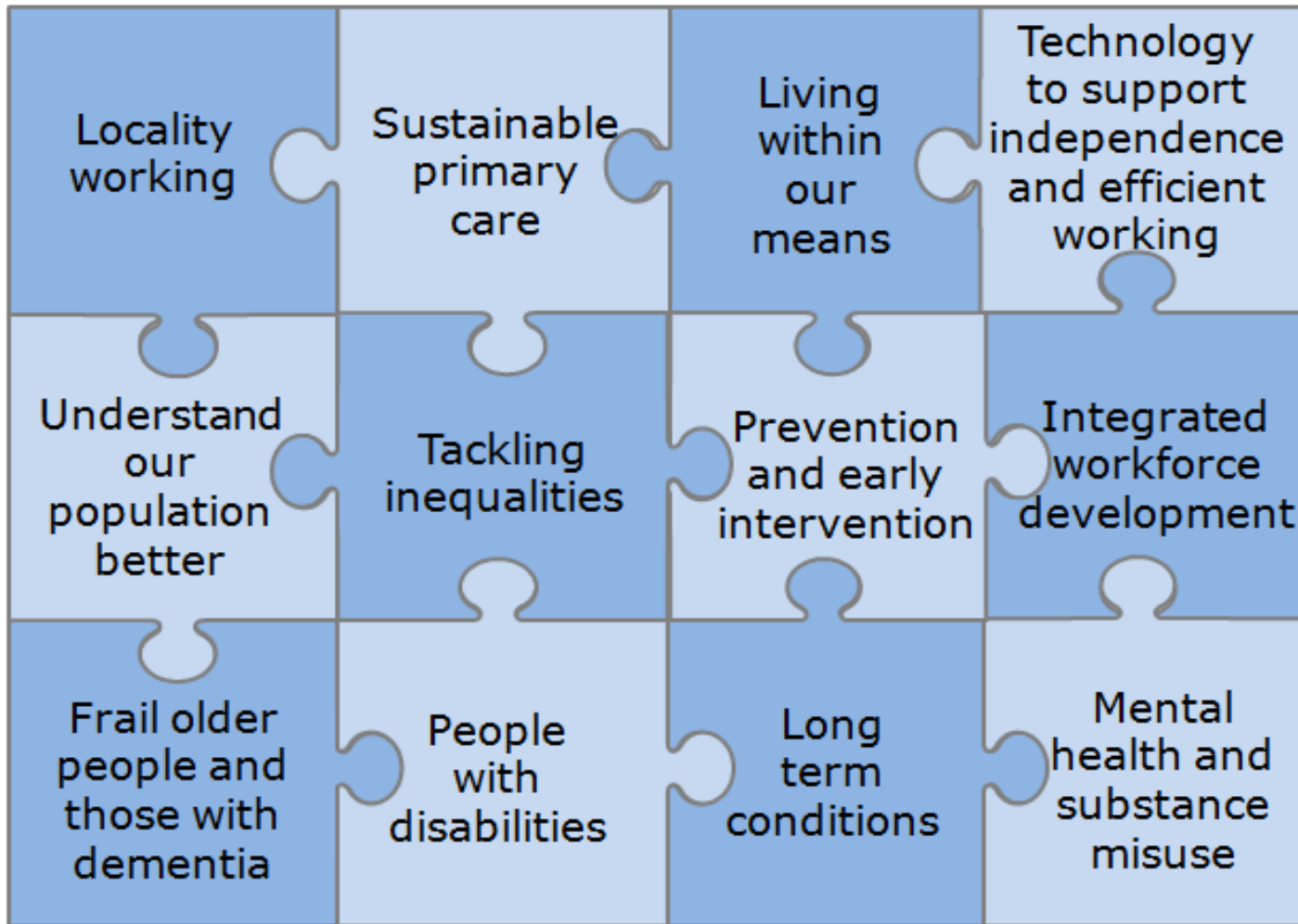


# **Delivery of the Edinburgh Health and Social Care Strategic Plan action plan**

**Edinburgh Integration Joint Board**

**Friday 16 September 2016**

# Areas of focus in the plan



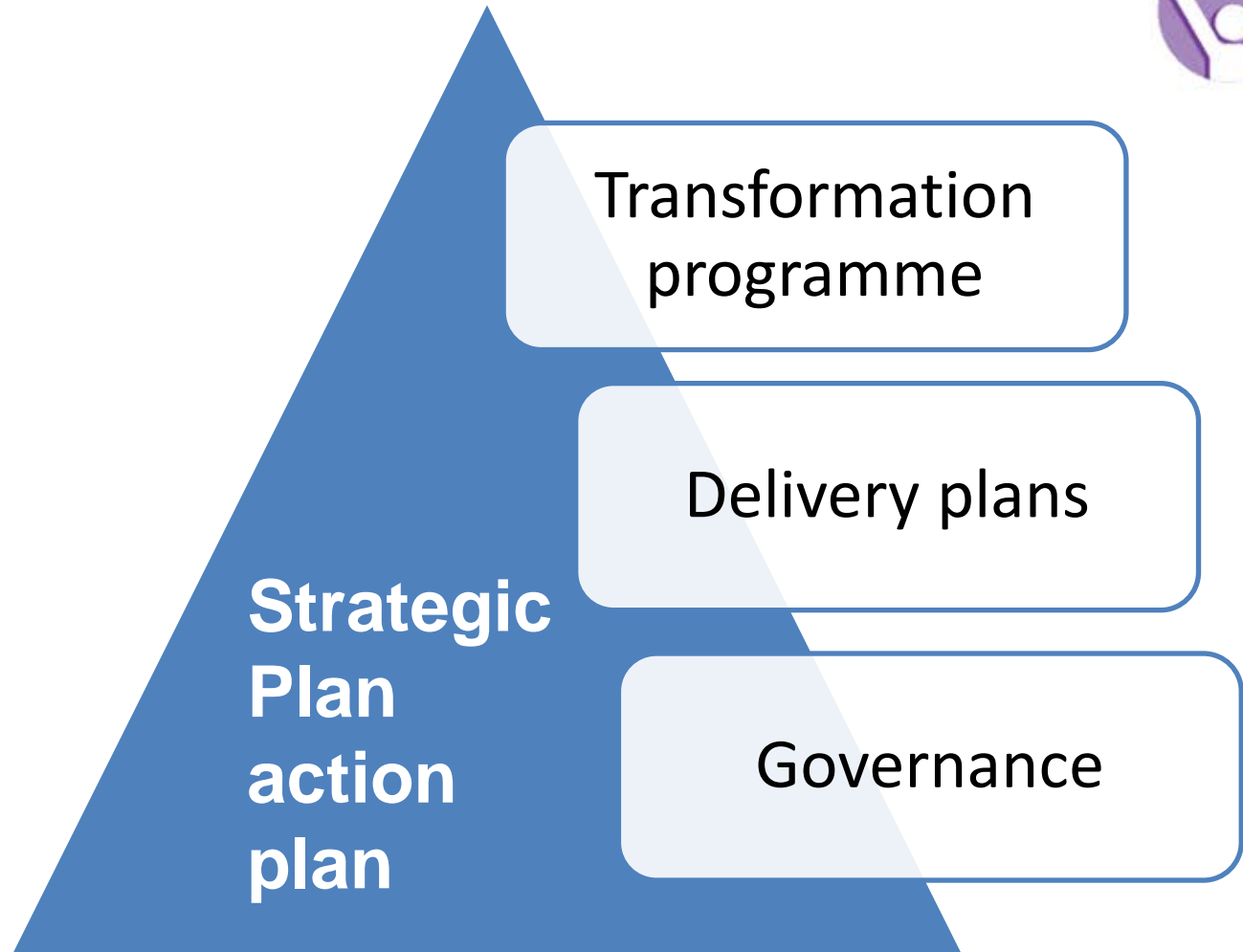
**44 high level actions**

# Progress reports to the IJB

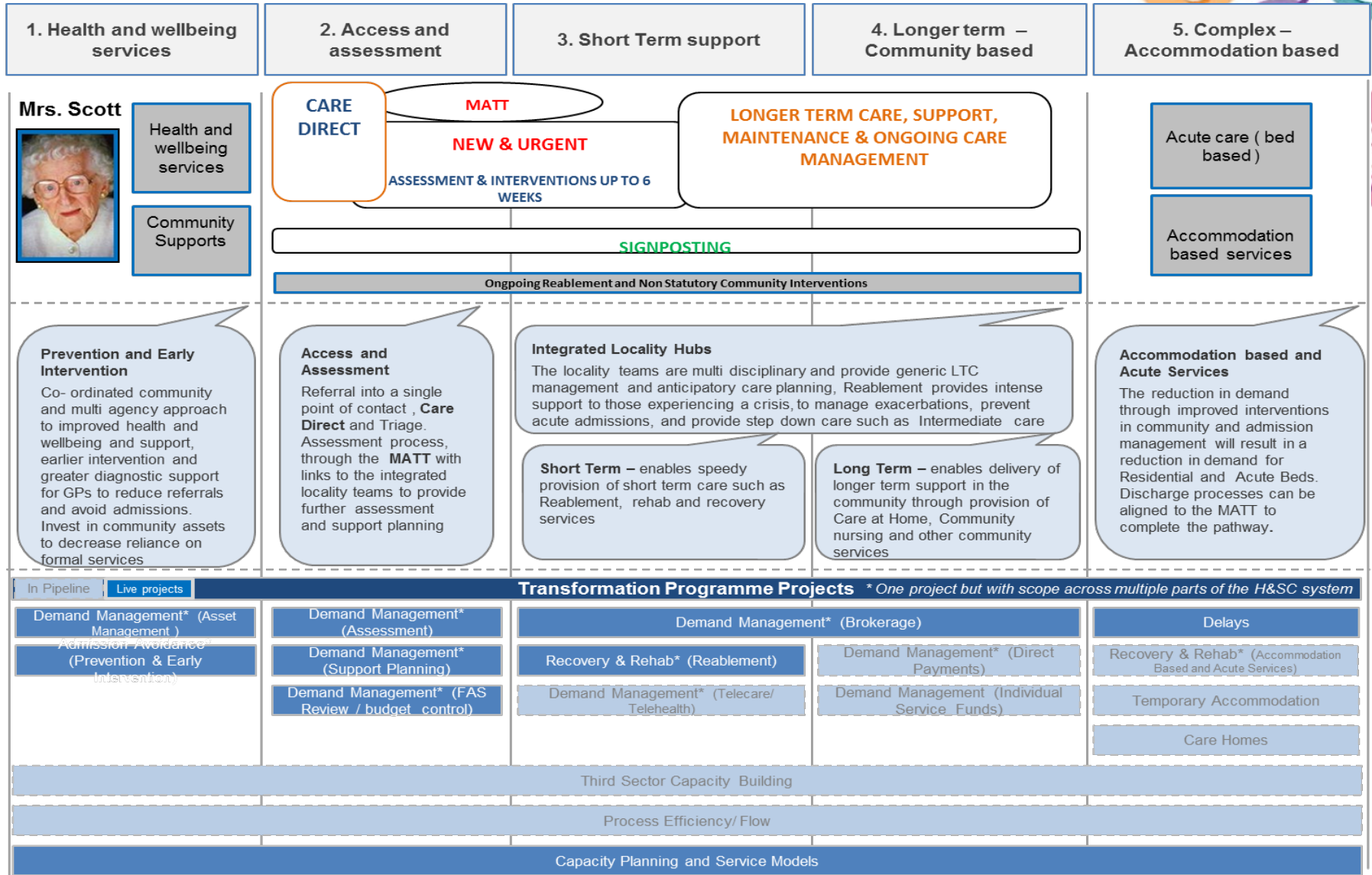
- Locality hubs – March ,May 2 and Sept 2016
- Hospitals plan – March 2016
- Capacity planning for older people – July 2016
- Hospital Based Clinical Complex Care – July and September 2016
- Primary Care – Development session June 2016
- Royal Edinburgh Hospital Phase 1 – Sept 2016
- Delayed discharge – March, May, July, and Sept 2016



# Approach to ensuring delivery



# Transformation programme



# Delivery plans

## Workshop held to

- Identify:
  - priorities for 2016/17
  - milestones, timescales, responsibility
  - linkages
  - requirements
  - risk and mitigation
- Clarify governance



Delivery plan and Gantt chart produced

Monitoring and escalation

# Delivery plans – current status



## Delivery plans completed for:

- Mental health and substance misuse
- Frail older people and those with dementia
- *People living with disabilities – in progress*

## Delivery plans still to be completed for:

- Long term conditions
- Primary care
- Locality working
- Tackling inequalities

*Prevention to form part of all plans*

# Edinburgh Strategic Plan for Health and Social Care



Delivery plan  
for  
Redesigning  
mental health  
and substance  
misuse  
services





# Strategic Plan Actions



23.  
Improving support for people with dementia

35.  
Personalised services to support recovery

33. Improving access to services

36.  
Support to keep people safe and well

34. Prevention and early intervention

37.  
Substance misuse services



## Priorities

2016/17

2017/18

2018/19

23 individual high level actions

# Priorities 2016/17

Re-provisioning of the Royal Edinburgh Hospital Phase 1 (REH)

Substance Misuse

- Residential (SMR)
- Community (SMC)

Development of community based wellbeing services (WBS)

Improving access to services by reducing waiting times for:

- Psychological therapies (WTPT)
- Substance misuse services (WTSMS)

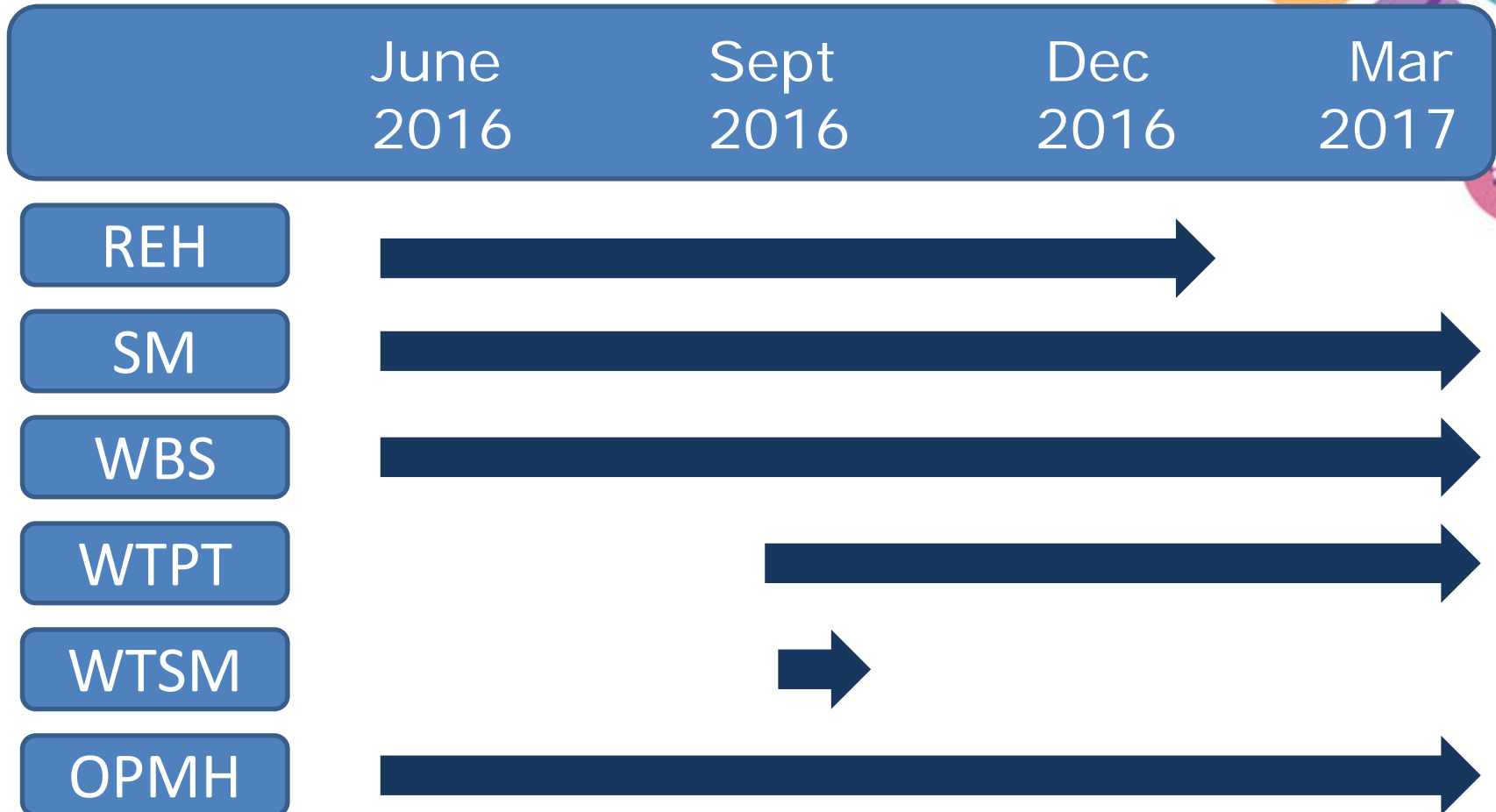
Older Peoples Mental Health (OPMH)

*Overlap with Delivery plan for improving care and support for frail older people and those with dementia*

48 milestones



# Programme Milestones



**See separate Gantt chart for details**

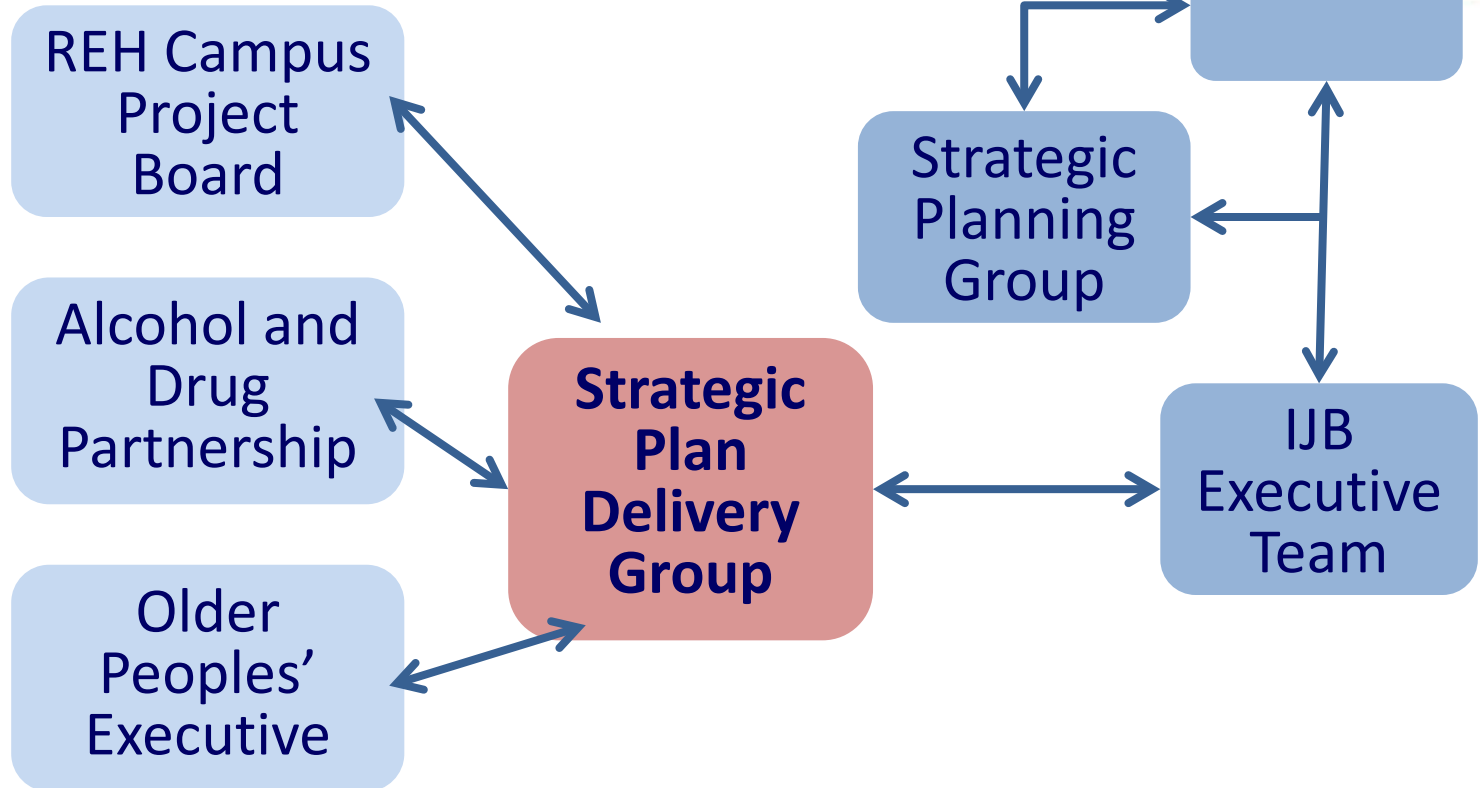
# Programme management

- Dependencies
- Requirements
  - ICT
  - Workforce planning and development
  - Performance and quality management
- Risk and mitigation

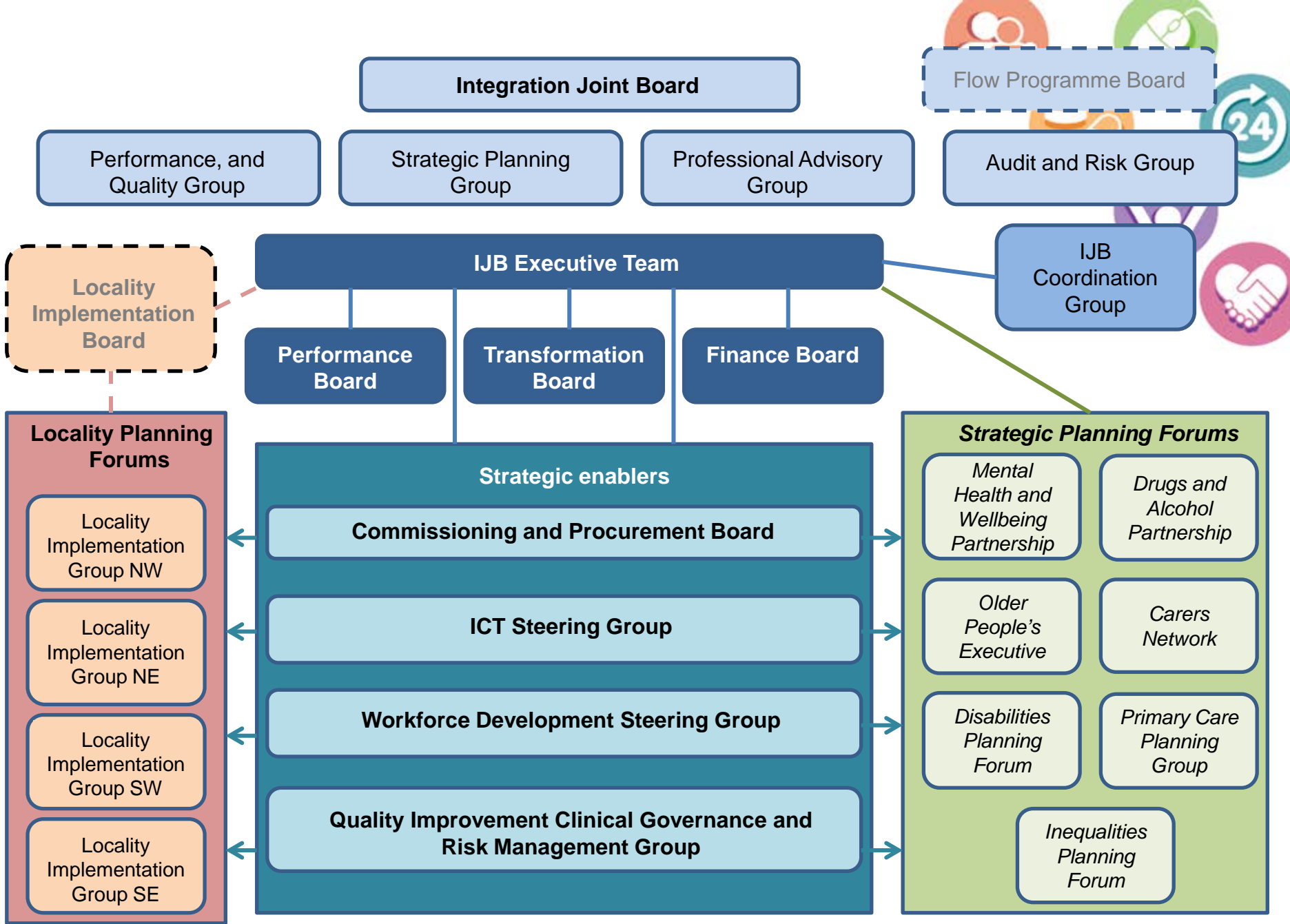


# Governance

## Mental Health and Wellbeing Partnership







# Role of the Strategic Planning Group



- Consider delivery plans and monitor progress
- Report to IJB by exception
- Overview of the Transformation Programme
- Consider business cases (outline and final) and recommend for approval to IJB



# SPG draft work plan



Sept 2016	<ul style="list-style-type: none"><li>• Transformation Programme overview</li><li>• Transformation Programme - Capacity and Demand workstream</li><li>• Older people delivery plan</li></ul>
Oct 2016	<ul style="list-style-type: none"><li>• Mental Health and Substance Misuse delivery plan</li><li>• Disabilities delivery plan</li><li>• Transformation Programme – Demand Management overview</li></ul>



# Recommendations

It is recommended that the Integration Joint Board

- note the arrangements in place for overseeing and progressing the strategic plan action plan
- agree that detailed consideration and scrutiny of delivery plans and business cases should be undertaken by the Strategic Planning Group
- agree to receive twice yearly reports from the Strategic Planning Group on the delivery of the Strategic Plan Action Plan

